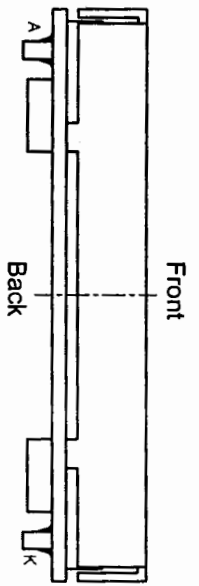
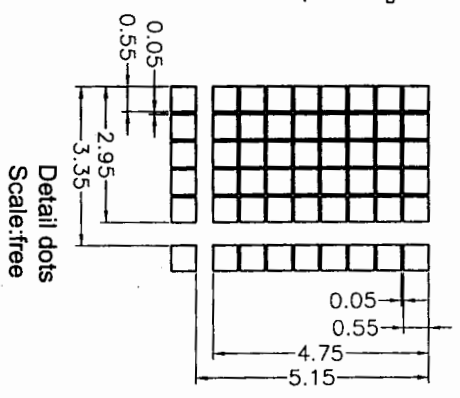
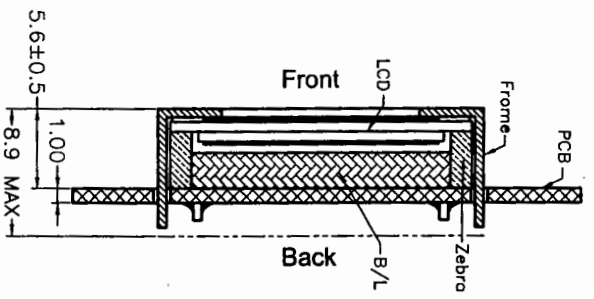
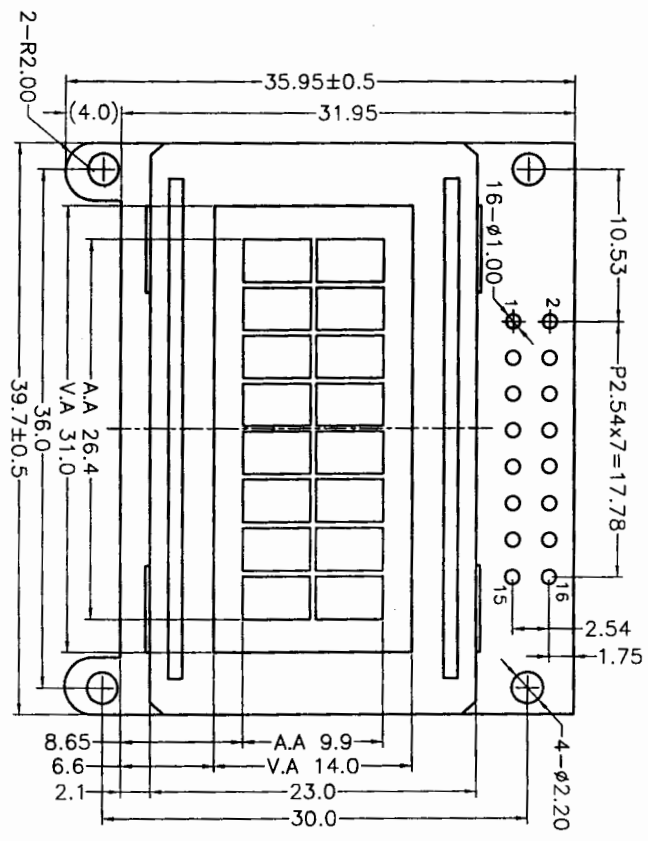
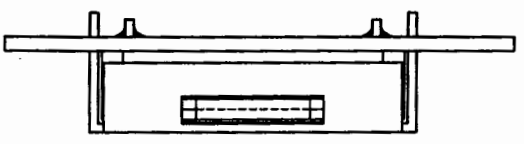


ISSUE	MODIFY DESCRIPTION	DATE



LCM speciality form:

Display Type	STN Y-G/Transflective
Display Resolution	8*2 Character type
Viewing Angle	6:00
Max. Ratio and Bias Level	1/16 Duty, 1/5 Bias
LCD Controller/Driver	CS0066(COB)
Logic Voltage	5.0V
LCD Driving Voltage	TBD
Operation Temperature	0°C~50°C
Storage Temperature	-20°C~70°C
Backlight Speciality	Side B/L(V/G)/V=4.1V±0.3
Remark	

1	2	3	4	5	6	7	8
VSS	VDD	VO	RS	RW	E	DB0	DB1
9	10	11	12	13	14	15	16
DB2	DB3	DB4	DB5	DB6	DB7	A	K

受控文件

TITLE:	Module Speciality		
ITEM NO.:			
PROJECT NO.:	JMK16A		
DESCRIPTION:	SFY11YNNC-06-CS-NSC	▽ : Critical dimension	(...): Reference dimension
◁: Special characteristic +: Safety characteristic Tolerance unless: x.xx±0.3 Otherwise specified: x.xx±0.2			
③ THIRD ANGLE PROJECTION			
DRAWN	NAME	SIGN	DATE
CHECKED	Luo Chui Zhan	[Signature]	08.07.03
CHECKED	Lan Li Juan	[Signature]	08.07.03
CHECKED	Gao Qing Tao	[Signature]	08.07.03
APPROVED	Wang Zhao Cai	[Signature]	08.07.03
REV. A	UNIT: mm	SCALE: 1:1	SHEET: 1 OF 1

GEI LCD